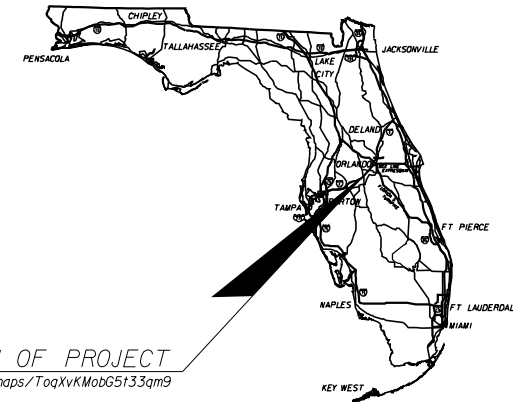


**BOARD OF OSCEOLA COUNTY COMMISSIONERS
OSCEOLA COUNTY, FLORIDA
ENGINEERING DEPARTMENT**

TYPICAL SECTION PACKAGE FOR
OSCEOLA COUNTY PROJECT NO. PS-20-11842-DG
FINANCIAL PROJECT ID 448781-1-22-01
OLD LAKE WILSON ROAD
PROJECT DEVELOPMENT AND ENVIRONMENT (PD&E) STUDY
FROM OSCEOLA POLK LINE ROAD (C.R. 532) TO SINCLAIR ROAD



PROJECT LOCATION URL:
<https://owpbstandardmap.fdot.gov/?marker=-81.59063431076854%2C28.259726298697693%2C%2C%2C&markertemplate=%7B%22title%22%3A%22447387%22%2C%22longitude%22%3A-81.59063431076854%2C%22latitude%22%3A28.259726298697693%2C%22isIncludeShareUrl%22%3Atrue%7D&level=14>

PROJECT DESCRIPTION: RECONSTRUCTION

PROJECT LIMITS: BEGIN C.R. 532 - END SINCLAIR ROAD

EXCEPTIONS: NONE

BRIDGE LIMITS: BRIDGE NO. 924179 OVER I-4 (S.R. 400)

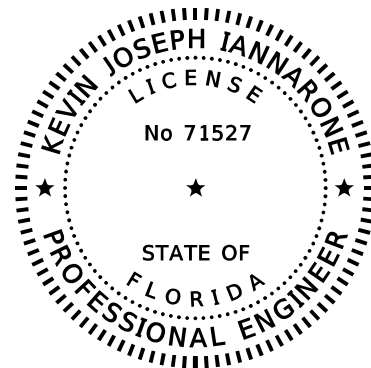
RAILROAD CROSSING: NONE

INDEX OF SHEETS

SHEET NO	SHEET DESCRIPTION
1	COVER SHEET
2	TYPICAL SECTION No. 1
3	TYPICAL SECTION No. 2
4	TYPICAL SECTION No. 3
5	TYPICAL SECTION No. 4
6	TYPICAL SECTION No. 5

APPROVED BY:

THIS ITEM HAS BEEN DIGITALLY
SIGNED AND SEALED BY



ON THE DATE ADJACENT TO THE SEAL

PRINTED COPIES OF THIS DOCUMENT ARE
NOT CONSIDERED SIGNED AND SEALED
AND THE SIGNATURE MUST BE VERIFIED
ON ANY ELECTRONIC COPIES.

INWOOD CONSULTING ENGINEERS, INC.
3000 DOVERA DRIVE, SUITE 200
OVIDO, FL 32765
CERTIFICATE OF AUTHORIZATION: 7074
KEVIN JOSEPH IANNARONE, P.E. NO. 71527

THE ABOVE NAMED PROFESSIONAL ENGINEER SHALL BE RESPONSIBLE FOR THE
FOLLOWING SHEETS IN ACCORDANCE WITH RULE 61G15-23.004, F.A.C.

**FDOT CONCURRENCE
TYPICAL SECTION No. 5:**

DocuSigned by: <i>Jeffrey Cicarella</i> E49D9D8620CD442...	06/19/2023 2:47 PM EDT
JEFFREY CICERELLO, P.E. FDOT District Design Engineer	Date
DocuSigned by: <i>Jim Wood</i> 668E396FACF9466...	06/19/2023 3:42 PM EDT
JIM WOOD, P.E. FDOT District Traffic Operations Engineer	Date
DocuSigned by: <i>Gary Skofronick</i> 88EAB110F694ED...	06/21/2023 11:40 AM EDT
GARY SKOFRONICK, P.E. FDOT District Structures Engineer	Date

OSCEOLA COUNTY CONCURRENCE:

STEVEN KANE, P.E. Osceola County Transportation & Transit Director	Date
GHASSAN CHOUEIRY, P.E. Osceola County Transportation Engineer	Date

SHEET NO.
1

PROJECT CONTROLS

CONTEXT CLASSIFICATION

- () C1 : NATURAL () C3C : SUBURBAN COMM.
- () C2 : RURAL () C4 : URBAN GENERAL
- () C2T : RURAL TOWN () C5 : URBAN CENTER
- () C3R : SUBURBAN RES. () C6 : URBAN CORE
- () N/A : L.A. FACILITY (X) N/A : OFF-STATE HIGHWAY

FUNCTIONAL CLASSIFICATION

- () INTERSTATE () MAJOR COLLECTOR
- () FREEWAY/EXPWY. () MINOR COLLECTOR
- () PRINCIPAL ARTERIAL () LOCAL
- (X) MINOR ARTERIAL

HIGHWAY SYSTEM

- () NATIONAL HIGHWAY SYSTEM
- () STRATEGIC INTERMODAL SYSTEM
- () STATE HIGHWAY SYSTEM
- (X) OFF-STATE HIGHWAY SYSTEM

ACCESS CLASSIFICATION

- () 1 - FREEWAY
- () 2 - RESTRICTIVE w/Service Roads
- () 3 - RESTRICTIVE w/660 ft. Connection Spacing
- () 4 - NON-RESTRICTIVE w/2640 ft. Signal Spacing
- () 5 - RESTRICTIVE w/440 ft. Connection Spacing
- () 6 - NON-RESTRICTIVE w/1320 ft. Signal Spacing
- () 7 - BOTH MEDIAN TYPES
- (X) N/A - OFF-STATE HIGHWAY SYSTEM

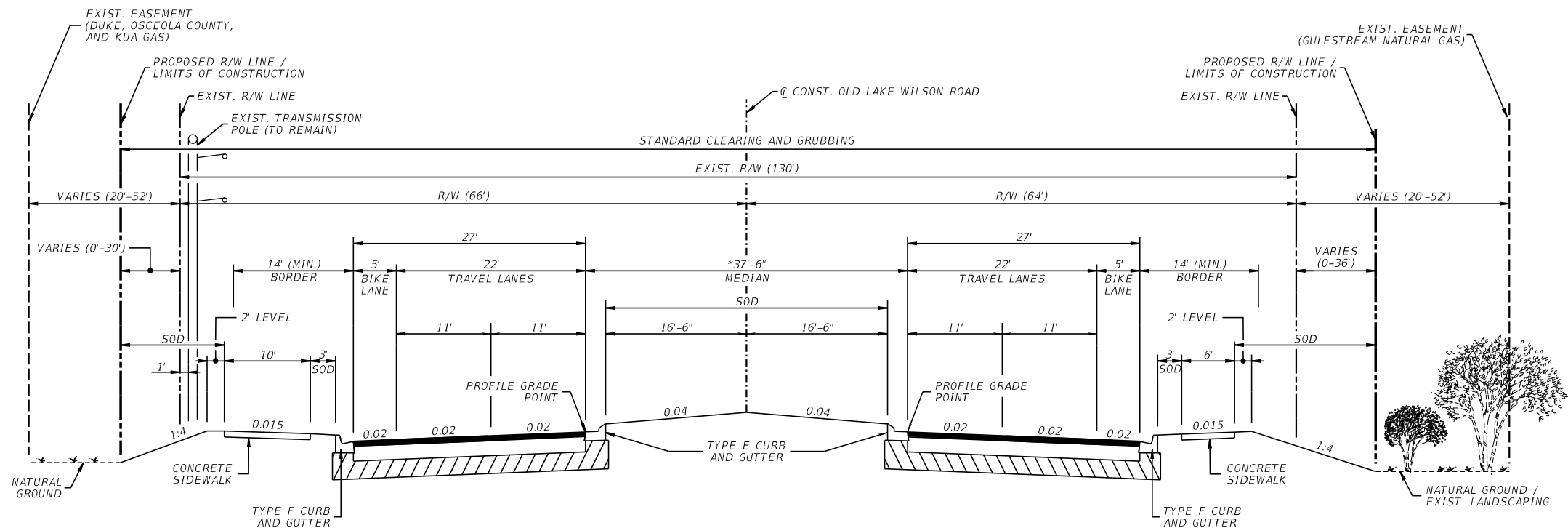
CRITERIA

- (X) NEW CONSTRUCTION / RECONSTRUCTION
- () RESURFACING (LA FACILITIES)
- () RRR (ARTERIALS & COLLECTORS)

POTENTIAL EXCEPTIONS AND VARIATIONS RELATED TO TYPICAL SECTION:

DESIGN VARIATION: BIKE LANE WIDTH

TYPICAL SECTION No. 1



TRAFFIC DATA (C.R. 532 TO SPINE ROAD)

CURRENT YEAR = 2020 AADT = 21500
 ESTIMATED OPENING YEAR = 2030 AADT = 26500
 ESTIMATED DESIGN YEAR = 2050 AADT = 35500
 K = 9% D = 63% T = 10% (24 HOUR)
 DESIGN HOUR T = 5%
 DESIGN SPEED = 45 MPH
 POSTED SPEED = 45 MPH
 TARGET SPEED = N/A (OFF-STATE HIGHWAY SYSTEM)

TRAFFIC DATA (SPINE ROAD TO FAIRFAX DRIVE)

CURRENT YEAR = 2020 AADT = 21500
 ESTIMATED OPENING YEAR = 2030 AADT = 26000
 ESTIMATED DESIGN YEAR = 2050 AADT = 33500
 K = 9% D = 63% T = 7.5% (24 HOUR)
 DESIGN HOUR T = 3.75%
 DESIGN SPEED = 45 MPH
 POSTED SPEED = 45 MPH
 TARGET SPEED = N/A (OFF-STATE HIGHWAY SYSTEM)

TRAFFIC DATA (FAIRFAX DRIVE TO SINCLAIR ROAD)

CURRENT YEAR = 2020 AADT = 21500
 ESTIMATED OPENING YEAR = 2030 AADT = 26000
 ESTIMATED DESIGN YEAR = 2050 AADT = 34500
 K = 9% D = 63% T = 7.5% (24 HOUR)
 DESIGN HOUR T = 3.75%
 DESIGN SPEED = 45 MPH
 POSTED SPEED = 45 MPH
 TARGET SPEED = N/A (OFF-STATE HIGHWAY SYSTEM)

OLD LAKE WILSON ROAD
 STA. 103+04.26 TO STA. 114+96.00 (NB & SB)
 STA. 116+18.00 TO STA. 134+50.00 (NB & SB)
 STA. 138+50.00 TO STA. 169+02.58 (NB & SB)
 STA. 170+15.35 TO STA. 187+08.43 (NB)
 STA. 170+15.35 TO STA. 185+94.31 (SB)
 STA. 196+32.16 TO STA. 232+87.80 (NB)
 STA. 202+99.95 TO STA. 232+87.80 (SB)

* MEDIAN WIDTH = 31'-6" FROM STA. 103+04.26 TO STA. 109+44.44

NOT TO SCALE

THE OFFICIAL RECORD OF THIS SHEET IS THE ELECTRONIC FILE DIGITALLY SIGNED AND SEALED UNDER RULE 61G15-23.004, F.A.C.

PROJECT CONTROLS

CONTEXT CLASSIFICATION

- () C1 : NATURAL () C3C : SUBURBAN COMM.
- () C2 : RURAL () C4 : URBAN GENERAL
- () C2T : RURAL TOWN () C5 : URBAN CENTER
- () C3R : SUBURBAN RES. () C6 : URBAN CORE
- () N/A : L.A. FACILITY (X) N/A : OFF-STATE HIGHWAY

FUNCTIONAL CLASSIFICATION

- () INTERSTATE () MAJOR COLLECTOR
- () FREEWAY/EXPWY. () MINOR COLLECTOR
- () PRINCIPAL ARTERIAL () LOCAL
- (X) MINOR ARTERIAL

HIGHWAY SYSTEM

- () NATIONAL HIGHWAY SYSTEM
- () STRATEGIC INTERMODAL SYSTEM
- () STATE HIGHWAY SYSTEM
- (X) OFF-STATE HIGHWAY SYSTEM

ACCESS CLASSIFICATION

- () 1 - FREEWAY
- () 2 - RESTRICTIVE w/Service Roads
- () 3 - RESTRICTIVE w/660 ft. Connection Spacing
- () 4 - NON-RESTRICTIVE w/2640 ft. Signal Spacing
- () 5 - RESTRICTIVE w/440 ft. Connection Spacing
- () 6 - NON-RESTRICTIVE w/1320 ft. Signal Spacing
- () 7 - BOTH MEDIAN TYPES
- (X) N/A - OFF-STATE HIGHWAY SYSTEM

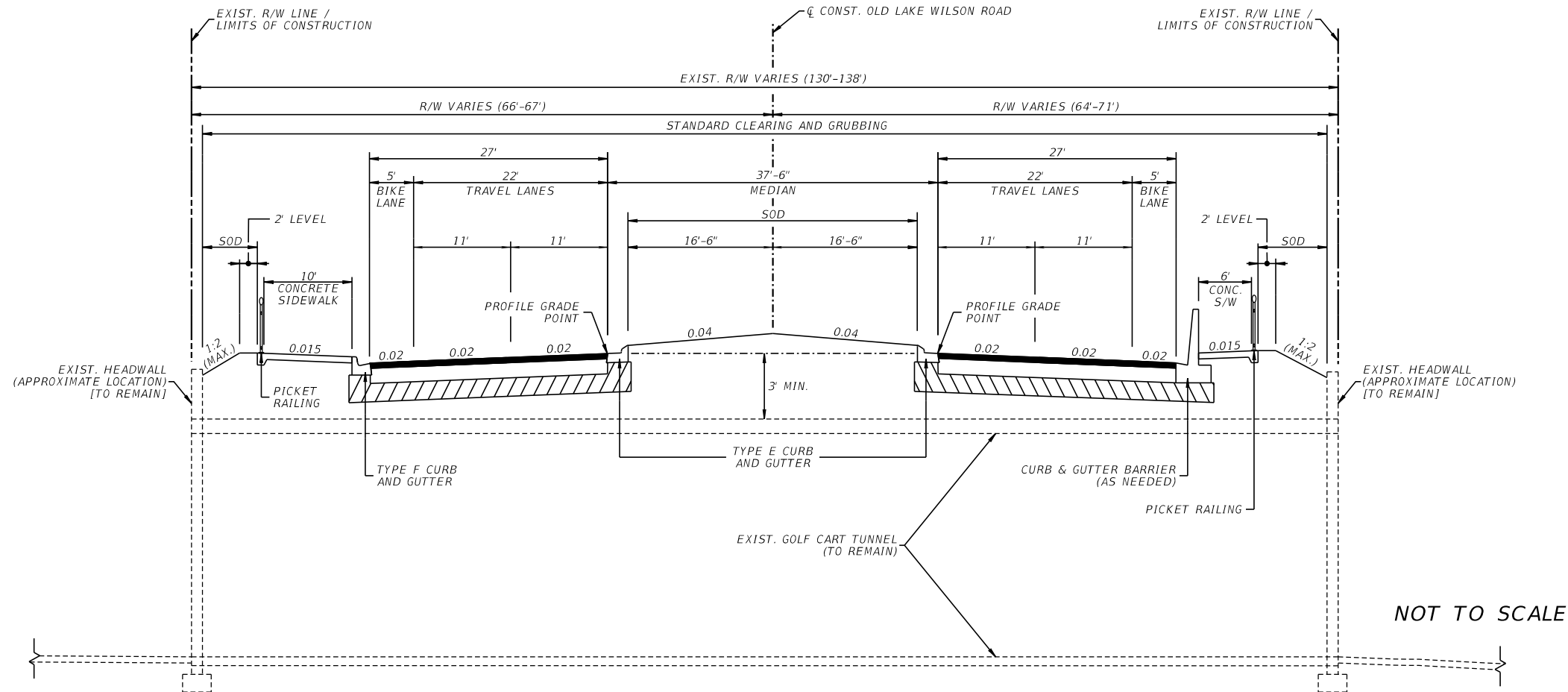
CRITERIA

- (X) NEW CONSTRUCTION / RECONSTRUCTION
- () RESURFACING (LA FACILITIES)
- () RRR (ARTERIALS & COLLECTORS)

POTENTIAL EXCEPTIONS AND VARIATIONS RELATED TO TYPICAL SECTION:

DESIGN VARIATION: BIKE LANE WIDTH

TYPICAL SECTION No. 2



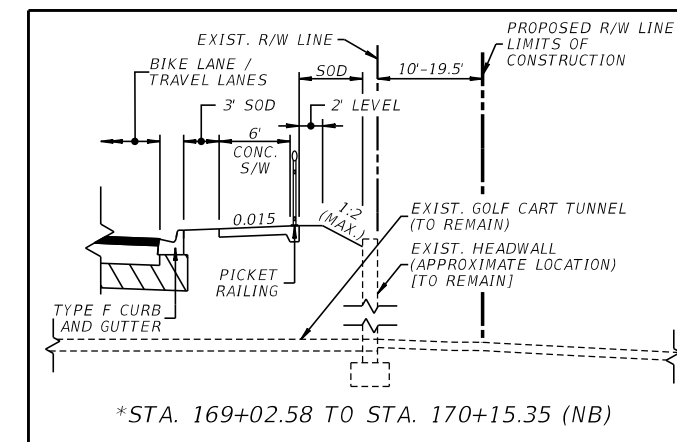
NOT TO SCALE

OLD LAKE WILSON ROAD OVER GOLF CART TUNNELS

STA. 114+96.00 TO STA. 116+18.00 (NB & SB)
 *STA. 169+02.58 TO STA. 170+15.35 (NB & SB)

TRAFFIC DATA (C.R. 532 TO SPINE ROAD)
 CURRENT YEAR = 2020 AADT = 21500
 ESTIMATED OPENING YEAR = 2030 AADT = 26500
 ESTIMATED DESIGN YEAR = 2050 AADT = 35500
 K = 9% D = 63% T = 10% (24 HOUR)
 DESIGN HOUR T = 5%
 DESIGN SPEED = 45 MPH
 POSTED SPEED = 45 MPH
 TARGET SPEED = N/A (OFF-STATE HIGHWAY SYSTEM)

TRAFFIC DATA (SPINE ROAD TO FAIRFAX DRIVE)
 CURRENT YEAR = 2020 AADT = 21500
 ESTIMATED OPENING YEAR = 2030 AADT = 26000
 ESTIMATED DESIGN YEAR = 2050 AADT = 33500
 K = 9% D = 63% T = 7.5% (24 HOUR)
 DESIGN HOUR T = 3.75%
 DESIGN SPEED = 45 MPH
 POSTED SPEED = 45 MPH
 TARGET SPEED = N/A (OFF-STATE HIGHWAY SYSTEM)



*STA. 169+02.58 TO STA. 170+15.35 (NB)

SHEET NO.
3

THE OFFICIAL RECORD OF THIS SHEET IS THE ELECTRONIC FILE DIGITALLY SIGNED AND SEALED UNDER RULE 61G15-23.004, F.A.C.

PROJECT CONTROLS

CONTEXT CLASSIFICATION

- () C1 : NATURAL () C3C : SUBURBAN COMM.
- () C2 : RURAL () C4 : URBAN GENERAL
- () C2T : RURAL TOWN () C5 : URBAN CENTER
- () C3R : SUBURBAN RES. () C6 : URBAN CORE
- () N/A : L.A. FACILITY (X) N/A : OFF-STATE HIGHWAY

FUNCTIONAL CLASSIFICATION

- () INTERSTATE () MAJOR COLLECTOR
- () FREEWAY/EXPWY. () MINOR COLLECTOR
- () PRINCIPAL ARTERIAL () LOCAL
- (X) MINOR ARTERIAL

HIGHWAY SYSTEM

- () NATIONAL HIGHWAY SYSTEM
- () STRATEGIC INTERMODAL SYSTEM
- () STATE HIGHWAY SYSTEM
- (X) OFF-STATE HIGHWAY SYSTEM

ACCESS CLASSIFICATION

- () 1 - FREEWAY
- () 2 - RESTRICTIVE w/Service Roads
- () 3 - RESTRICTIVE w/660 ft. Connection Spacing
- () 4 - NON-RESTRICTIVE w/2640 ft. Signal Spacing
- () 5 - RESTRICTIVE w/440 ft. Connection Spacing
- () 6 - NON-RESTRICTIVE w/1320 ft. Signal Spacing
- () 7 - BOTH MEDIAN TYPES
- (X) N/A - OFF-STATE HIGHWAY SYSTEM

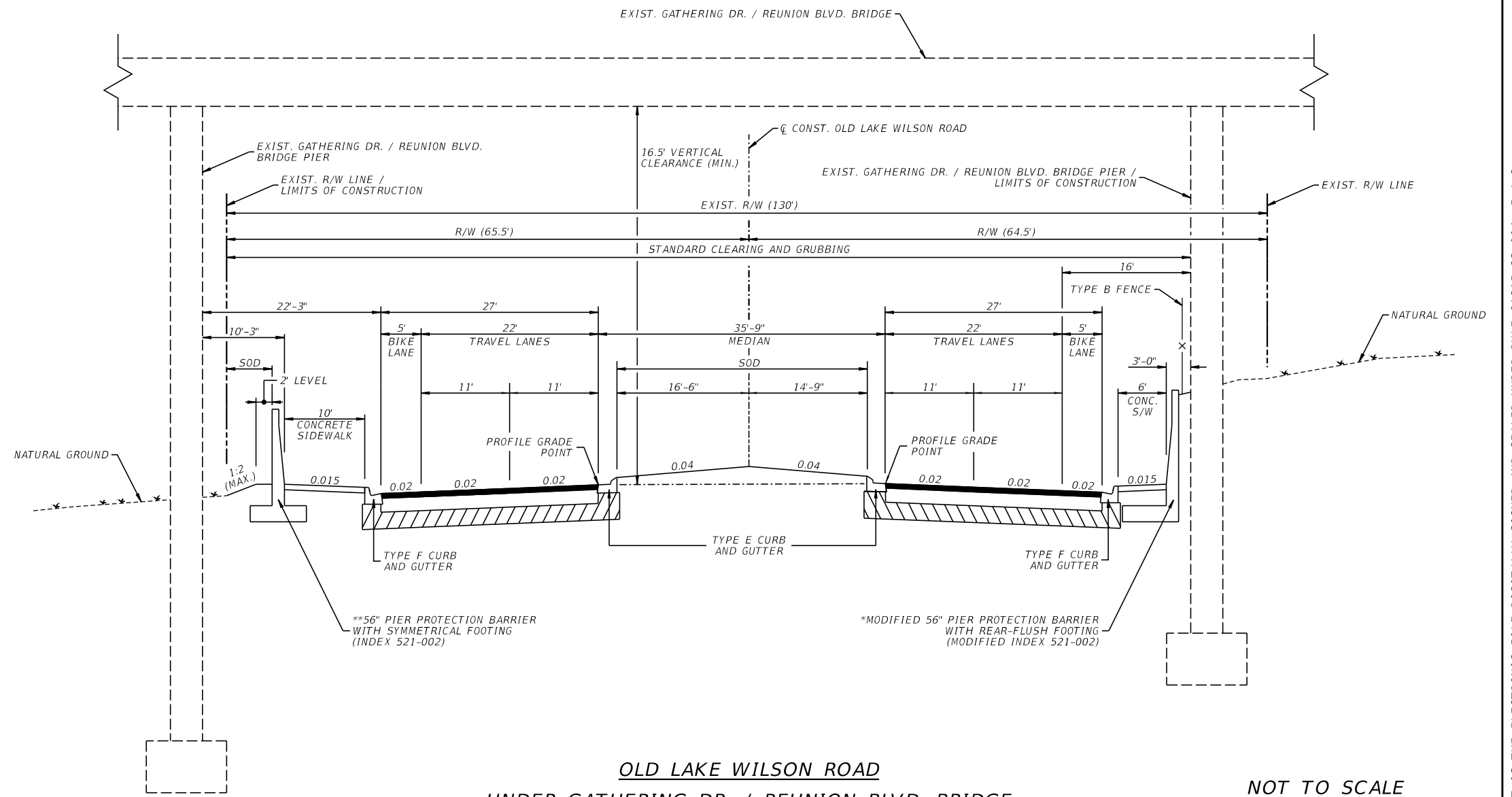
CRITERIA

- (X) NEW CONSTRUCTION / RECONSTRUCTION
- () RESURFACING (LA FACILITIES)
- () RRR (ARTERIALS & COLLECTORS)

POTENTIAL EXCEPTIONS AND VARIATIONS RELATED TO TYPICAL SECTION:

DESIGN VARIATION: BIKE LANE WIDTH

TYPICAL SECTION No. 3



OLD LAKE WILSON ROAD
UNDER GATHERING DR. / REUNION BLVD. BRIDGE
 STA. 134+50.00 TO STA. 138+50.00 (NB & SB)

NOT TO SCALE

* MODIFIED PIER PROTECTION BARRIER AND TYPE B FENCE FROM STA. 131+00.00 TO STA. 139+00.00
 ** PIER PROTECTION BARRIER FROM STA. 136+20.00 TO STA. 137+00.00

TRAFFIC DATA
(C.R. 532 TO SPINE ROAD)

CURRENT YEAR = 2020 AADT = 21500
 ESTIMATED OPENING YEAR = 2030 AADT = 26500
 ESTIMATED DESIGN YEAR = 2050 AADT = 35500
 K = 9% D = 63% T = 10% (24 HOUR)
 DESIGN HOUR T = 5%
 DESIGN SPEED = 45 MPH
 POSTED SPEED = 45 MPH
 TARGET SPEED = N/A (OFF-STATE HIGHWAY SYSTEM)

SHEET NO.

4

THE OFFICIAL RECORD OF THIS SHEET IS THE ELECTRONIC FILE DIGITALLY SIGNED AND SEALED UNDER RULE 61G15-23.004, F.A.C.

PROJECT CONTROLS

CONTEXT CLASSIFICATION

- () C1 : NATURAL () C3C : SUBURBAN COMM.
- () C2 : RURAL () C4 : URBAN GENERAL
- () C2T : RURAL TOWN () C5 : URBAN CENTER
- () C3R : SUBURBAN RES. () C6 : URBAN CORE
- () N/A : L.A. FACILITY (X) N/A : OFF-STATE HIGHWAY

FUNCTIONAL CLASSIFICATION

- () INTERSTATE () MAJOR COLLECTOR
- () FREEWAY/EXPWY. () MINOR COLLECTOR
- () PRINCIPAL ARTERIAL () LOCAL
- (X) MINOR ARTERIAL

HIGHWAY SYSTEM

- () NATIONAL HIGHWAY SYSTEM
- () STRATEGIC INTERMODAL SYSTEM
- () STATE HIGHWAY SYSTEM
- (X) OFF-STATE HIGHWAY SYSTEM

ACCESS CLASSIFICATION

- () 1 - FREEWAY
- () 2 - RESTRICTIVE w/Service Roads
- () 3 - RESTRICTIVE w/660 ft. Connection Spacing
- () 4 - NON-RESTRICTIVE w/2640 ft. Signal Spacing
- () 5 - RESTRICTIVE w/440 ft. Connection Spacing
- () 6 - NON-RESTRICTIVE w/1320 ft. Signal Spacing
- () 7 - BOTH MEDIAN TYPES
- (X) N/A - OFF-STATE HIGHWAY SYSTEM

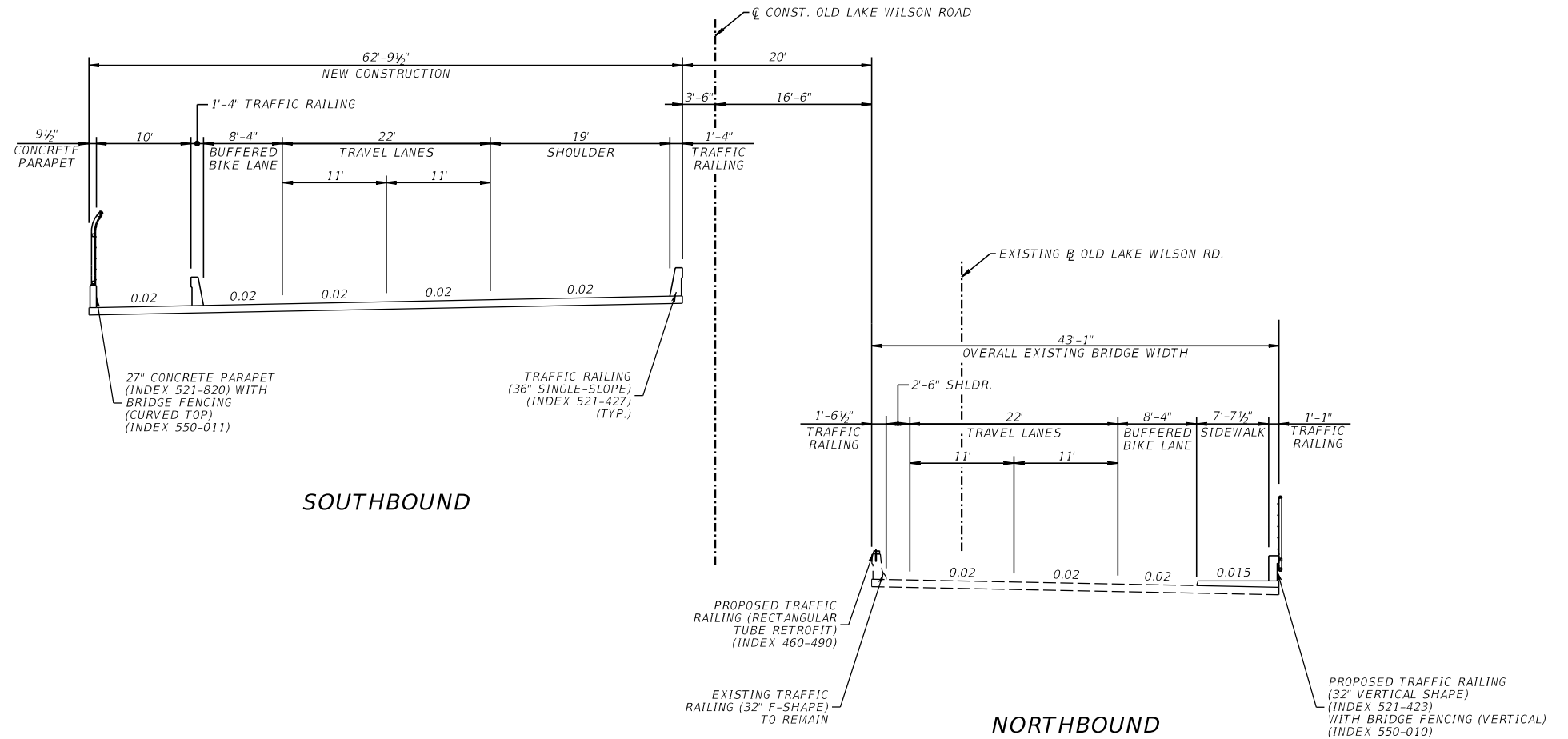
CRITERIA

- (X) NEW CONSTRUCTION / RECONSTRUCTION
- () RESURFACING (LA FACILITIES)
- () RRR (ARTERIALS & COLLECTORS)

POTENTIAL EXCEPTIONS AND VARIATIONS RELATED TO TYPICAL SECTION:

DESIGN VARIATION: BIKE LANE WIDTH

TYPICAL SECTION No. 4



SOUTHBOUND

NORTHBOUND

**OLD LAKE WILSON ROAD
BRIDGE OVER I-4**

NOT TO SCALE

STA. 187+08.43 TO STA. 196+32.16 (NB)
STA. 185+94.31 TO STA. 202+99.95 (SB)

NOTES:

1. STATION LIMITS SHOWN ABOVE INCLUDE APPROACH SLABS.
2. THE EXISTING (NORTHBOUND) BRIDGE WILL REQUIRE REPLACEMENT IF I-4 BTU IS CONSTRUCTED AS SHOWN IN TYPICAL SECTION No. 5.

**TRAFFIC DATA
(SPINE ROAD TO FAIRFAX DRIVE)**

CURRENT YEAR = 2020 AADT = 21500
ESTIMATED OPENING YEAR = 2030 AADT = 26000
ESTIMATED DESIGN YEAR = 2050 AADT = 33500
K = 9% D = 63% T = 7.5% (24 HOUR)
DESIGN HOUR T = 3.75%
DESIGN SPEED = 45 MPH
POSTED SPEED = 45 MPH
TARGET SPEED = N/A (OFF-STATE HIGHWAY SYSTEM)

SHEET NO.

5

THE OFFICIAL RECORD OF THIS SHEET IS THE ELECTRONIC FILE DIGITALLY SIGNED AND SEALED UNDER RULE 61G15-23.004, F.A.C.

PROJECT CONTROLS

CONTEXT CLASSIFICATION

- () C1 : NATURAL () C3C : SUBURBAN COMM.
- () C2 : RURAL () C4 : URBAN GENERAL
- () C2T : RURAL TOWN () C5 : URBAN CENTER
- () C3R : SUBURBAN RES. () C6 : URBAN CORE
- (X) N/A : L.A. FACILITY () N/A : OFF-STATE HIGHWAY

FUNCTIONAL CLASSIFICATION

- (X) INTERSTATE () MAJOR COLLECTOR
- () FREEWAY/EXPWY. () MINOR COLLECTOR
- () PRINCIPAL ARTERIAL () LOCAL
- () MINOR ARTERIAL

HIGHWAY SYSTEM

- (X) NATIONAL HIGHWAY SYSTEM
- () STRATEGIC INTERMODAL SYSTEM
- () STATE HIGHWAY SYSTEM
- () OFF-STATE HIGHWAY SYSTEM

ACCESS CLASSIFICATION

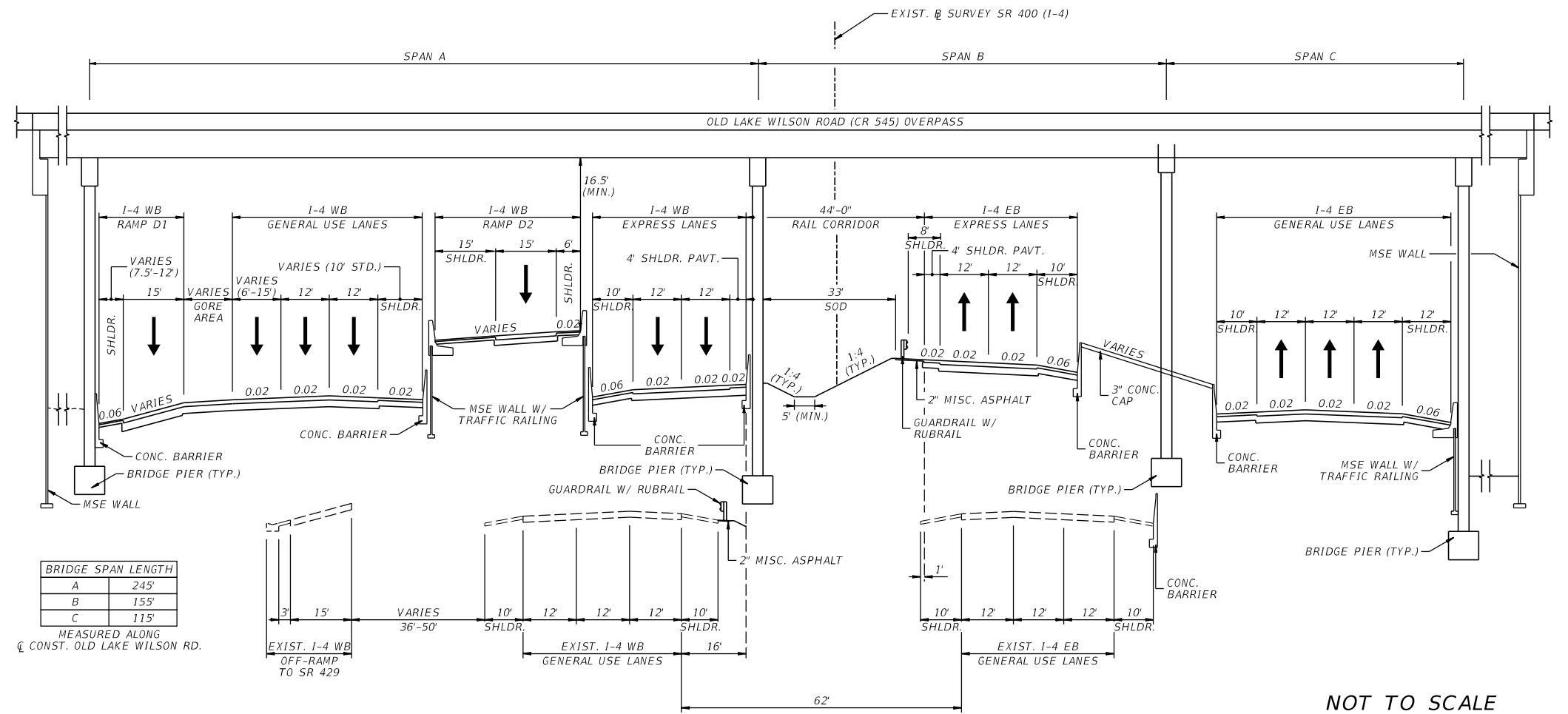
- (X) 1 - FREEWAY
- () 2 - RESTRICTIVE w/Service Roads
- () 3 - RESTRICTIVE w/660 ft. Connection Spacing
- () 4 - NON-RESTRICTIVE w/2640 ft. Signal Spacing
- () 5 - RESTRICTIVE w/440 ft. Connection Spacing
- () 6 - NON-RESTRICTIVE w/1320 ft. Signal Spacing
- () 7 - BOTH MEDIAN TYPES
- () N/A - OFF-STATE HIGHWAY SYSTEM

CRITERIA

- (X) NEW CONSTRUCTION / RECONSTRUCTION
- () RESURFACING (LA FACILITIES)
- () RRR (ARTERIALS & COLLECTORS)

POTENTIAL EXCEPTIONS AND VARIATIONS RELATED TO TYPICAL SECTION:

TYPICAL SECTION No. 5



SR 400 (I-4) "BEYOND THE ULTIMATE" AT OLD LAKE WILSON ROAD OVERPASS

TRAFFIC DATA

CURRENT YEAR = 2022 AADT = 161550
 ESTIMATED OPENING YEAR = 2030 AADT = 176000
 ESTIMATED DESIGN YEAR = 2050 AADT = 210400
 K = 7% D = 55% T = 6% (24 HOUR)
 DESIGN HOUR T = 3%
 DESIGN SPEED = 70 MPH
 POSTED SPEED = 60 MPH
 TARGET SPEED = N/A (L.A. FACILITY)

NOT TO SCALE

SHEET NO.

6

THE OFFICIAL RECORD OF THIS SHEET IS THE ELECTRONIC FILE DIGITALLY SIGNED AND SEALED UNDER RULE 61G15-23.004, F.A.C.